



Interface Dynamics v3.0 is an operator interface library built to support process-operator interface goals

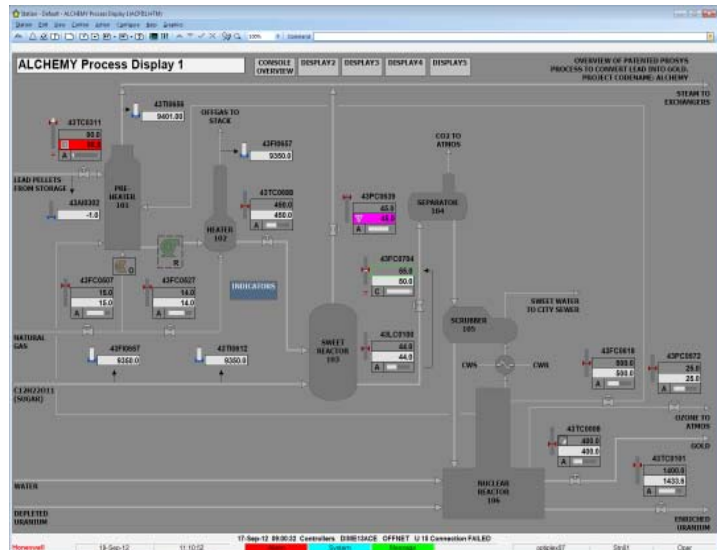
Safely and reliably operate the plant by improving operator awareness, focus, speed of response and effectiveness to identify and resolve plant problems

Efficiently and profitably operate the plant by identifying areas of operation that are deviating from desired values and encouraging operator response which reduces operator loading by over 33%

ESD/Permissive Displays – increases plant on-stream time by showing exactly what caused unit shutdown or specifically what is preventing startup

Easily adhere to corporate operator interface standards by configuration updates in one place vs. the expensive process of customizing, creating the need to maintain custom graphics

- Lower risk of operator error by 50% - result is fewer unit trips due to operator error. Operator error is reduced by:
 - » Eliminating distractions caused by changing focus between graphic to faceplate
 - » Reduces opportunity for changes to unintended tags
 - » Reduces loading managing multiple faceplates

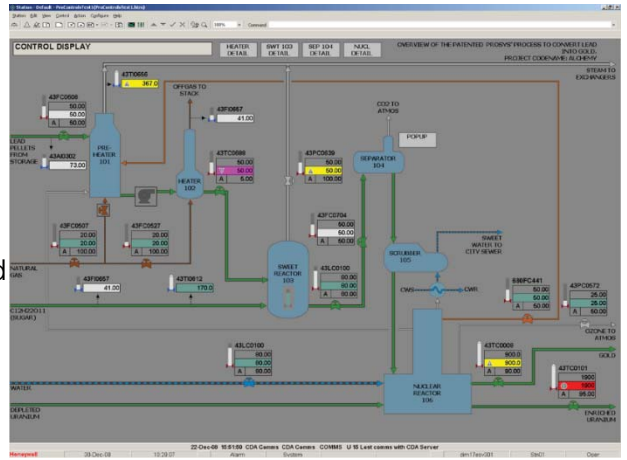


PRODUCT BENEFITS

- One-display library - convert shapes from any library with one-click
- Future proof - the Interface Dynamics library is continually improving with new features and enhancements, shape upgrade tool allows for ease of upgrades
- Flexibility – powerful displays allow a user to adjust the view according to their needs
- Consistency – objects used to represent data have a common look and feel, regardless of the system type
- Ease of maintenance – template displays and documentation to facilitate maintenance of existing displays and creation of new ones
- Trending capabilities – display historical information for a single point (quick trend) or multiple points (full trend)
- Consistency – objects used to represent data have a common look and feel, regardless of the system type
- Ease of maintenance – template displays and documentation to facilitate maintenance of existing displays and creation of new ones

INTERFACE ATTRIBUTES

- Color scheme – designed to reduce eye strain and improve recognition of alarms and other abnormal items
- Quick entry speed with fewer keystrokes – more intuitive usage and quick display call-up
- Common interface shapes – ensures processes are displayed in a consistent manner, without cluttering the screen with unnecessary detail. Reduces the time required to generate displays
- Consistent look and feel – reduces operator training and increases operator recognition



INTERFACE ELEMENTS

Common interface elements allow for easier interpretation of the process and process readings to recognize potential problems before they escalate and also includes a standard entry format which makes operations safer, more intuitive and more oriented toward operator response. Common elements include:

- Dynamic shapes – supports both DIN and classic equipment shapes
- Values, indications and control points – values are easily changed at the element
- Context menu – available on all points with a right click
- Hyperlinks – provides a standard interface for navigating process displays
- Console overview – shows any deviation from a marked process or unit setting (PV/SP/OP) at a glance
- Tooltips – provides additional information on mouse hover
- Menu bar – provides easy, standardized access to all functions on all displays, reducing required keystrokes
- Color section – improves recognition of alarms and abnormal conditions in a timely and efficient manner

